



Tender with the eco-label HOLZ VON HIER[®] (HVH) LOW CARBON TIMBER[®] (LCT) for communities

Doc. Ref. No. LIFE_CVC_C2.1

version: November 2021

In coordination with project partners from other countries of the European Union

Autor

**HOLZ VON HIER
LOW CARBON TIMBER**

European headquarters

Your contact persons:

Philipp Strohmeier, Gabriele Bruckner

please call: + 49 (0) 9209 918 97 51

www.holz-von-hier.eu

This publication is made in the frame of the project "EU LIFE climate value chains", funded by the European commission.

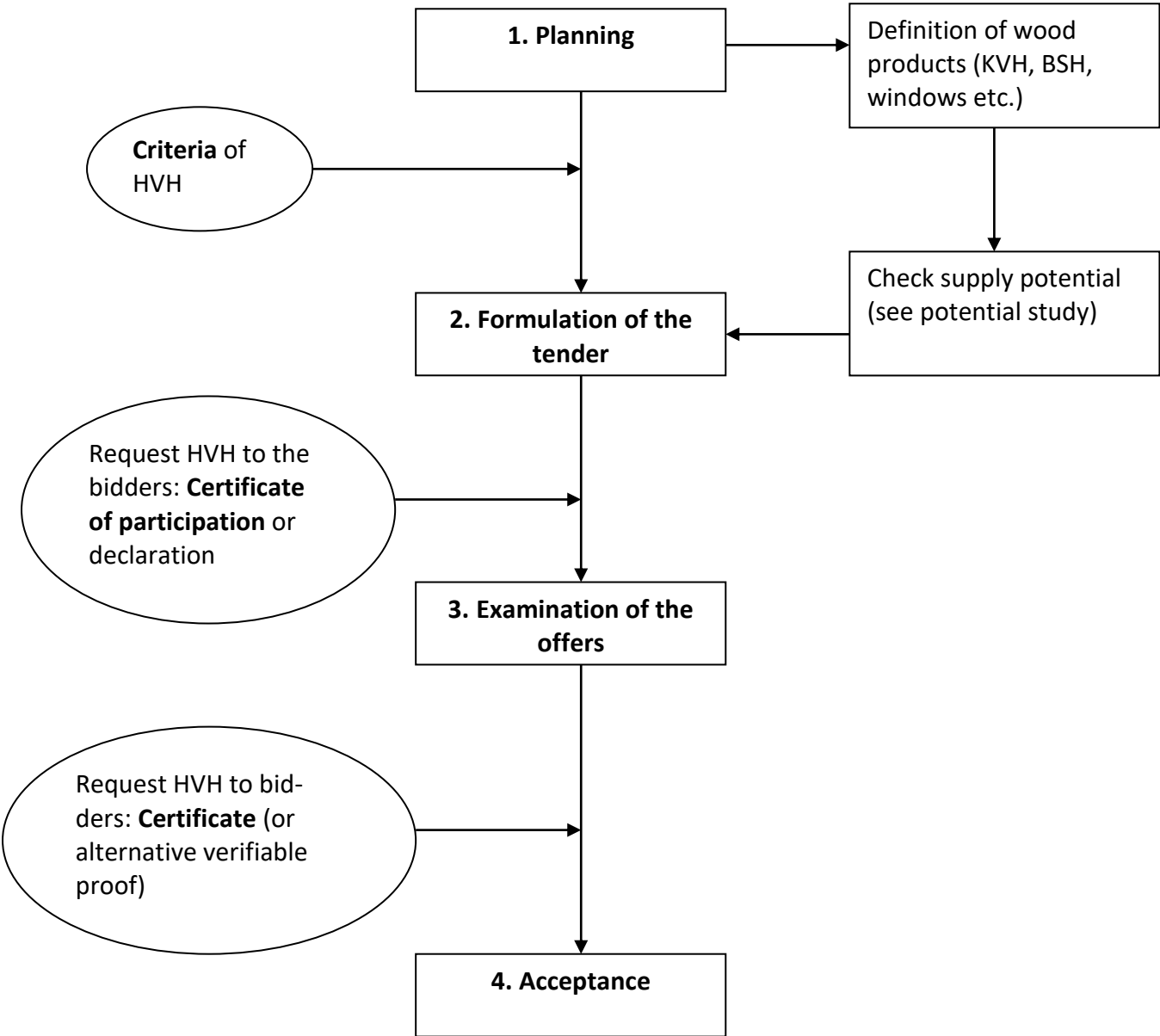


The contents of this publication are the sole responsibility of Holz von Hier and do not necessarily reflect the opinion of the European Union.

Table of contents

Flowchart tender with LCT / HVH	1
Explanation of the procedure	2
Annex 1: LCT/HVH criteria for wood products	4
Annex 2: Sample form for bidders	5
Annex 3: Sample certificate of participation	6
Annex 4: Sample product certificate (page 1, page 2)	7/8
Annex 5: Sample text for the formulation of the requirement LCT / HVH in the introduction of the invitation to tender	9
Annex 6: Sample text for the formulation of the requirement LCT / HVH as award criteria in the invitation to tender	10
Annex 7: Range-specific upper limits for products certifiable according to LCT / HVH certifiable products (page 1, page 2)	11/12

Flowchart tender with LCT / HVH



Explanation of the procedure

Step 1: Planning:

Planning partly determines the possibility of using wood products with a particularly low carbon footprint. The more specialized the building product, the higher the carbon footprint and the lower the possibility of sourcing products from regional or short process chains.

The HVH potential study presents the distance and volume potentials for products certified according to LCT/HVH for various wood / building products.

Basically, there is no supply problem with LCT/HVH certified products for construction timber, KVH, BSH, energy wood, windows, floors or interior wood.

On the web page www.holz-von-hier.eu can be searched for enterprises and/or offerers already registered with wood of here. However, if a company is not yet registered, this does not mean that it cannot supply products certified by LCT/HVH, as the network is open and participation is possible for market participants at any time.

If you are unsure, the LCT / HVH head office will be happy to help.

Step 2: Formulation of the tender:

In principle, a tender with reference to or integration of the LOW CARBON TIMBER® resp. HOLZ VON HIER® eco-label for wood is possible under public procurement law. In the meantime, 4 expert opinions on this subject have been issued by experts in public procurement law. The ecological basis is the high importance of the upstream chains (gray energy) and here above all the transports in the environmental balance of (wood) products. This also corresponds to a consistent consideration of the life cycle concept.

Following the amendment of public procurement law at European and now also national level, it is also permissible to refer to a specific eco-label. Nevertheless, it is important for the formulation of the invitation to tender that the criteria on which the eco-label is based or which are formulated there are made transparent so that every bidder can understand and comprehend the requirements. The criteria are described in Annex 1.

For the formulation of tenders, text modules are provided as samples, which can be adapted to the specific object if necessary. In principle, however, the requirement for wood is rather independent of the product.

When inviting tenders, a form (see Appendix 2) can be provided in the tender documents, which the bidder must complete and sign. This explains how the bidder intends to meet the requirements for LOW CARBON TIMBER® resp. HOLZ VON HIER®.

Basically, there are two different ways to set the requirements in tenders. On the one hand, this can be anchored as a product-related requirement in the specifications and is thus a hard decision criterion. If this is not fulfilled, the bid will be excluded. This option ensures that the environmental goals are achieved in any case. On the other hand, the requirements can also be formulated as an award criterion. In this case, fulfillment of the requirements is awarded more points than non-fulfillment and can thus outperform a lower-priced bid. In this case, the criterion is not 'hard' and it is possible that a bid that does not meet the desired environmental impact will be accepted.

Step 3: Examination of the offers:

The step of formulating the requirements in the invitation to tender has been taken. But how does the awarding authority check whether the requirements will be met in the event of an award? Since the products to be used have generally not yet been produced and purchased at the time of the invitation to tender (a bidder generally does not procure the raw materials on an order-related basis until after the contract has been awarded), no product certification is available at this point.

In this case, the awarding authority has the opportunity to check the bid with regard to compliance with the requirements on the basis of the completed declaration. Ideally, the bidder should submit a certificate of participation with the declaration to LOW CARBON TIMBER® resp. HOLZ VON HIER®, which can easily be obtained at short notice during tender deadlines. A certificate of participation is reproduced in Annex 3. Alternatively, he can also declare that he will present a certificate according to LOW CARBON TIMBER® resp. HOLZ VON HIER® for the delivered wood products upon delivery or performance of the work.

Alternatively, he can also declare that he verifiably proves or demonstrates the requirements or criteria according to LOW CARBON TIMBER® resp. HOLZ VON HIER® in another way. However, he and the awarding authority must be aware that this cannot be proven by a mere self-declaration, but that the routes of the wood from the place of felling through the entire process chain must be verifiably (!) documented. This would have to be done by a documentation, verified by third parties, of the transport distances from the forest location to the sawmill, from the sawmill to a possible further processing and from there - if necessary via the trade - to the bidder or to the construction site..

Step 4: Inspection at factory acceptance:

After or at the time of delivery of the wood products or installation in a building, the carbon footprint of the products is already known. The easiest way for a company to document compliance with the requirements of HOLZ VON HIER is with a product-related certificate from LOW CARBON TIMBER® resp. HOLZ VON HIER®. An example is given in Appendix 4. The awarding authority (or the planner) has the possibility to check the authenticity directly online by entering the ID number via the product-related certificate. If the certificate is correct, the certificate with identical content must appear on the screen for downloading.

Annex 1: Criteria of LCT / HVH for wood products

Criteria or requirements for products marked with LOW CARBON TIMBER® ® resp. HOLZ VON HIER® or equivalent products are:

- The raw wood must come from sustainably managed forests, i.e. a forest management certificate (FSC, PEFC) must be available for the harvesting location of the roundwood.
- A product must not contain wood of tree species classified as internationally endangered (International Red List according to IUCN).
- The respective wood product must have been produced with above-average low transport costs, taking into account the flow of goods along the entire processing chain, and thus in an environmentally friendly and resource-friendly manner. The flows of goods are considered to have above-average transport efficiency if they do not exceed defined maximum distance limits for each node or processing step in the process chain. The upper limits defined for specific assortments can be viewed on the LCT / HVH website (see also Appendix 7: Transport limits).
- These upper limits are always below the average transport distances over which the respective assortment is usually transported. These values are based on material flow analyses and scientific evaluations of life cycle assessments and others. They are regularly subjected to a plausibility check.
- The mass balance must work out, i.e. each company in the processing chain must prove that it does not market more of the manufactured product under HVH or equivalent than the raw material required for production was also obtained from here according to the criteria of LOW CARBON TIMBER® ® resp. HOLZ VON HIER®.

Annex 2: Sample form for bidders

Bidder	Award number	Date
Construction measure		
Power		

Declaration on the use of wood products

All wood products to be used are certified according to LOW CARBON TIMBER® resp. HOLZ VON HIER® or equivalent. For documentation purposes I will

Use wood products that are certified with LOW CARBON TIMBER® resp. HOLZ VON HIER®. As proof of suitability, I will include a certificate of participation from LOW CARBON TIMBER® resp. HOLZ VON HIER® with my bid.

Use wood products that are certified according to LOW CARBON TIMBER® resp. HOLZ VON HIER®

- I assure with my signature that I will present a product-specific certificate for the delivered or installed wood products when providing the service.
- I will use wood products that meet the criteria of LOW CARBON TIMBER® resp. HOLZ VON HIER® and submit an itemized bill for this.
- This individual certificate must verifiably prove the routes or transport distances from the place of felling through the various stations of the entire process chain as well as the quantity conformity (i.e. at each processing station no more product is marketed or supplied in accordance with the criteria than the necessary raw material was previously procured in accordance with the criteria).

I will present the respective proof in the original for:

- Construction work before the installation of the wood or wood products
- Delivery services during the delivery of the wood or wood products.

Date

Signature of the bidder

Anhang 3: Muster einer Teilnahmebescheinigung

Exemple



we are member*
ID/S-xx-08237-1

*certified products are identified by
their own certificate

Membership certificate

Thomas Riegger carpentry staircase construction

At the Hohlgass 2

xx - 78052 Tannheim

This certificate confirms that the company
Thomas Riegger carpentry-staircase construction
is a registered member of the network of the climate and environmental
label LOW CARBON TIMBER©, HOLZ VON HIER© and is able to
manufacture or offer products that meet the criteria of
LOW CARBON TIMBER©, HOLZ VON HIER© for particularly
climate-friendly products from sustainable forestry.

The certificate does not represent a product certificate!

**The proof for the conformity of products with the
criteria of LOW CARBON TIMBER©, HOLZ VON HIER©
is provided by a separate certificate for a specific delivery or
product a specific product.**

10.11.2021

Date

LOW CARBON TIMBER, HOLZ VON HIER

Annex 4: Sample product certificate (page 1)



CERTIFICATE

ID-No.

Check the authenticity of this certificate by scanning the QR code or by entering the ID in the search field:

www.low-carbon-timber.eu; www.holz-von-hier.eu

This certificate confirms that the awarded product or building is particularly climate- and environmentally friendly through Timber of short distances and from sustainable forestry.

This has made an important contribution to the protection of climate, environment, biodiversity and resources, as well as to the promotion of regional added value.

Product certificate for final customers

Third-party audited in accordance with the Standard PS 880 of the German Institute of Auditors (DIW)

This certificate certifies the flow of goods according to the criteria of Low Carbon Timber along the entire processing chain from the forest to the place of use or to the private or municipal end customer



A1

A2

A3

A4

Sustainable sourcing

Transports within CoC

Production

Transports gate to customer

Certificate issuing company

final customer:

Attachment with product specifications

Annex 4: Sample product certificate (page 2)

CERTIFICATE

ID-No.

With this certificate, the following transaction is certified by Low Carbon Timber:

Recipient of certificate:

Date of issue:

Product

Recipient (adress of delivery)	Deliverer	References
<input type="text"/>	<input type="text"/>	<input type="text"/>

Wood within the product

Assortment	Timber species	amount / unit	Cumulated transport laod	CO ₂ -Seques-tration ¹
<input type="text"/>	<input type="text"/>	<input type="text"/>	<input type="text"/>	<input type="text"/>
<input type="text"/>	<input type="text"/>	<input type="text"/>	<input type="text"/>	<input type="text"/>
<input type="text"/>	<input type="text"/>	<input type="text"/>	<input type="text"/>	<input type="text"/>

Third-party audited in accordance with Standard PS 880 of the German Institute of Auditors (DIW)

Low Carbon Timber uses the mass balance method (credit method) in accordance with ISO 38200. The organisational structure and development of the eco-label are compliant with ISO 14024.

TÜV
AUSTRIA
zertifizierter Prozess

¹) Calculation of CO₂ sequestration according to EN 16449

Annex 5: Sample text for the formulation of the LCT / HVH requirement in the introduction to the invitation to tender

The introductory section of the RFP could state:

Proof of LOW CARBON TIMBER® (LCT) resp. HOLZ VON HIER® (HVH) certificate or equivalent

The bidder confirms that he will be responsible for the entire work described in the positions

XXXX-1, XXXX-2, XXXX-3 ...

listed wood,

- uses products with LOW CARBON TIMBER® or HOLZ VON HIER® certificate or an equivalent certificate or
- complies with the requirements for obtaining such a certificate or an equivalent certificate for the products used. More information can be found at the following link <https://www.holz-von-hier.eu/ueber-holz-von-hier/das-umweltzeichen/abgerufen>. The corresponding transport limits can also be found in Annex xxxx of the announcement.

Contacts LCT / HVH for questions or suggestions:

LOW CARBON TIMBER HOLZ VON HIER

European headquarters
your contacts:
Philipp Strohmeier, Gabriele Bruckner
Tel.: +49 (0)9209 - 918 97 51
info@holz-von-hier.de

LOW CARBON TIMBER Germany HOLZ VON HIER Germany

Your contacts:
Philipp Strohmeier, Gabriele Bruckner
Tel.: +49 (0)9209 - 918 97 51
info@holz-von-hier.de

If, after the contract has been awarded, this is not complied with despite the bidder stating that valid proof is available or that registration will be carried out when the contract is awarded, the client reserves the right to demand a contractual penalty of 3 % of the bid amount.

With the completion of the service, the LOW CARBON TIMBER® resp. HOLZ VON HIER® certificate or equivalent, which certifies the flow of goods according to the criteria of LOW CARBON TIMBER® resp. HOLZ VON HIER® along the entire processing chain from the forest to the place of use resp. to the private or municipal end customer, has to be handed over to the client.

Annex 6: Sample text for the formulation of the requirement LCT / HVH as award criteria in the invitation to tender

Evaluation criteria:

In order to ensure that the project is implemented in a comprehensively climate-friendly manner with consistent application of the life cycle approach, the awarding authority _____ also takes sustainability aspects into account in addition to price when evaluating bids.

The following requirements are set here for timber products:

- a) Origin from sustainable forestry (5 points) (e.g.)
- b) climate-optimized production (5 points) (e.g.)

Proofs:

- a) Origin from sustainable forestry:

The bidder shall submit a certificate according to FSC, PEFC, LOW CARBON TIMBER® resp. HOLZ VON HIER® or a comparable proof for the wood products used.

- b) Climate-optimized production:

The bidder shall submit a certificate according to HOLZ VON HIER® or comparable proof for the wood products used.

More information on this can be found at the following link <https://www.holz-von-hier.eu/ueber-holz-von-hier/das-umweltzeichen/abgerufen>. The corresponding transport limits can also be taken from Annex xy of the announcement.

Contact points LCT / HVH for questions or suggestions:

LOW CARBON TIMBER HOLZ VON HIER

European headquarters
your contacts:
Philipp Strohmeier, Gabriele Bruckner
Tel.: +49 (0)9209 - 918 97 51
info@holz-von-hier.de

LOW CARBON TIMBER Germany HOLZ VON HIER Germany

Your contacts:
Philipp Strohmeier, Gabriele Bruckner
Tel.: +49 (0)9209 - 918 97 51
info@holz-von-hier.de

Weighting of the criteria:

The bid with the highest quotient of sustainability score and price will be awarded the contract.

Appendix 7: Assortment-specific upper limits for products certifiable according to LCT / HVH(Page 1)



Transport limits

Upper limits for transport distances permitted under HOLZ VON HIER (HVH) between the respective links in the processing chain. The limits can accumulate over the product chain. However, these upper limits are always well below the average of the respective transport distances of corresponding products to market.

RUNDWOOD	Wood species	LCT upper limit [km]
Nadel-Rundholz	Spruce	75
Nadel-Rundholz	Pine, fir, larch, Douglas fir	150
Laub-Rundholz	beech, oak	200
andere Laub-Rundhölzer	other hardwoods	250

SAWN TIMBER / WOOD PRODUCTS	Wood species	LCT upper limit [km]
Softwood lumber (NH) and planed timber	Spruce	150
	Other NH	200
Hardwood lumber (LH)	Beech, oak	200
	other LH	250
KVH	Spruce	200
	Other NH	250
BSH	all types	250
DUO-/TRIO	all types	250
Timber construction [1]	all types	250
Planks	all types	300
Parquet	all types	300
CLT, cross laminated timber	all types	350
„Dübelholz“, MHM & Co	all types	350
Solid wood panels	all types	350
Veneer	all types	350
Plywood	all types	350
Window scantlings	all types	350
Building elements (windows, doors, facades)	all types	350
panel materials (chipboard, OSB, MDF, etc.)	all types	350
sports floors	all types	400
thermowood	all types	450
refined special products	all types	450

Appendix 7: Assortment-specific upper limits for products certifiable according to LCT / HVH (Page 2)



Transport limits - page 2

BIOENERGY	Wood species	LCT upper limit [km]
Firewood	all types	50
Firewood ready for stove	all types	100
Sawmill residues (sawdust, wood chips)	all types	200
Wood chips, energetic	all types	250
Pellets	all types	350

PULP - PAPER - CARDBOARD	Wood species	LCT upper limit [km]
Raw materials for paper	all types	in development
Pulp	Sulfat	in development
Pulp	Sulfit	in development
Paper for graphic purposes	all types	in development
Paper for hygienic purposes	all types	not yet in development
Paper / cardboard for packaging	all types	not yet in development

OTHER product groups	Wood species	LCT upper limit [km]
Exterior wood (terraces, fences, benches)	all types	300
Small products, merchandising	all types	in development

Delivery to end customer and through trade ^[2]	Wood species	LCT upper limit [km]
Wooden buildings inclusive all fixtures, interior fittings. Furniture, interior, etc.	all types	200
Printed products	all types	in development
Newspapers	all types	in development
Books	all types	in development

Status and validity

These limits were updated by Board of Trustees resolution on August 2020 and are in effect until further notice.

Footnotes

[1] Analogy to BSH due to the higher complexity of the associated timber structures.

[2] This means any supply from non-manufacturing companies to end customers outside the LOW CARBON TIMBER, HOLZ VON HIER network, regardless of the otherwise defined boundaries. Special products may be regulated separately.